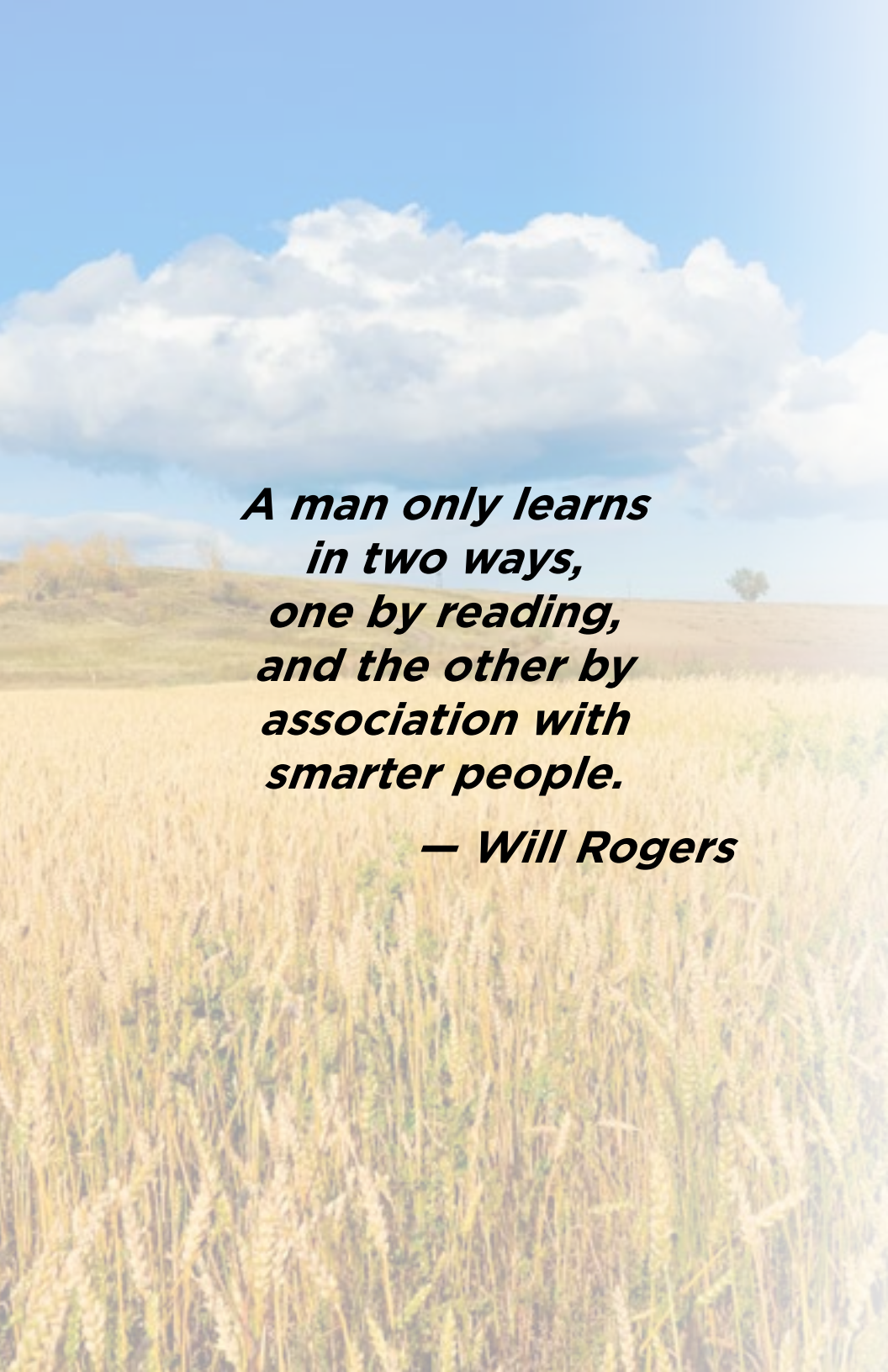




EXPERTS in EXCELLENCE

**Oklahoma Center
for Nonprofits**

2017-2018 Annual Report



***A man only learns
in two ways,
one by reading,
and the other by
association with
smarter people.***

— Will Rogers

When it comes to learning, we want to learn from the best. Will Rogers – our state’s luminary humorist and thinker – said associating ourselves with the best ensures we learn and put into practice what it takes to be successful. In the spirit of Will Rogers, we hope Oklahomans will continue an important partnership of learning and convening with us as we build better communities through effective nonprofits.

Since 1981, the Oklahoma Center for Nonprofits has used a unique combination of expertise, experience, resources and reputation to help our state’s more than 19,000 nonprofits be the best that they can be. These nonprofits are our members, our friends and our advocates. More importantly, our donors and supporters have ensured that we can meet our mission with cutting-edge training and professional development, leadership supports, consulting, membership and advocacy.

We couldn’t do this without our partners. If you believe in nonprofits, work with nonprofits, volunteer with nonprofits, donate to nonprofits, serve on boards of nonprofits or simply champion nonprofits, the Oklahoma Center for Nonprofits is there for any organization, day and many times night, to solve problems, impart wisdom, share knowledge and be a good friend.

We have the Expertise.

We have the Experience.

We have the Resources.

We have the Reputation of Excellence.

I hope you enjoy our 2018 Annual Report highlighting our groundbreaking work in the sector. Join us as we celebrate our expertise, experience, resources and reputation! I personally thank you for your continued support of our endeavors and we look forward to another year of bright futures for our charitable sector, our members and our citizens.



Marnie Taylor
President and CEO



We have the EXPERTISE

**We currently serve on 17 nonprofit boards of directors,
and have served on a total of 61.**

We have over 120 years of board service.

**Half of OKCNP staff have advanced degrees in various
areas, including nonprofit management, marketing and
business administration.**

**We have earned various certifications, including:
Standards for Excellence®, BoardSource, various
leadership assessment tools, coaching and technology.**

We have the Expertise.

Our expertise sets us apart. Our diverse skill sets in fundraising, governance, finance, operations, public relations, marketing and compliance help our nonprofits each and every day by answering their questions and helping them to solve problems. We are lifelong learners ourselves, bringing not just expertise but new information and ideas to the sector. We value professional development on our team so that we can develop thousands of new, emerging and experienced managers, leaders and volunteers in our sector.

TRAINING BY THE NUMBERS

July 1, 2017 - June 30, 2018

Total Training Sessions	243
Number of Training Attendees	2,759

COURSE TOPICS AT A GLANCE

Resource Development	22
Standards for Excellence	19
Diversity, Equity and Inclusion	17
Management and Leadership	12
Board Governance	10
Marketing and Communications	8
Special Events	8
Advocacy and Public Policy	7
Finance and Accounting	5
National Speakers Series	4



We have the EXPERIENCE

**We have more than 220 years
of nonprofit experience.**

**We have more than 230 years
of for-profit experience.**

**Current OKCNP staff have been with the
organization for a combined 59 years.**

We have the Experience.

Just within the five members of our leadership team, OKCNP has more than 100 years of combined experience working in the charitable sector, serving on boards of directors and as leaders in various nonprofits.

We have acted as executive directors, development directors, board chairs and community leaders. Our experiences help shape our delivery of cutting-edge professional development and consulting to nonprofits.

We have experienced successes and challenges. Therefore, we can teach and consult from those varied capabilities.

CONSULTING PROJECTS BY THE NUMBERS

July 1, 2017 - June 30, 2018

Total Consulting Projects	108
Board Governance Projects	33
Strategic Planning Projects	32
Other Projects	43
Number of Projects Led by OKCNP Staff	92



We have the **RESOURCES**

**Standards for Excellence is our backbone curriculum.
It informs everything we teach.**

We have a number of leadership assessment tools.

**We utilize the best practices in board governance,
fundraising and strategic planning.**

We have the Resources.


Our backbone curriculum is the Standards for Excellence® and our core values are designed to bring best, established and emerging practices to nonprofits of every size and type throughout Oklahoma. Whether a large nonprofit with hundreds of staff members or an all-volunteer-driven mission, we have the flexibility to provide tool kits to grow and prosper.

Our training options cover topics as wide-ranging as fundraising and governance to marketing and leadership development. And our consulting services can be tailored to any situation an organization might be facing.

Most importantly, we help to convene nonprofits and philanthropists together to discuss current issues facing the sector, share knowledge and wisdom and plan for the future.

SERVICES AVAILABLE TO NONPROFITS

- Membership
- Professional Development
- Leadership and Management Training
- Customized Consulting Services
- Shared Financial Services
- Advocacy and Government Relations
- Recognition Awards
- Free Helplines



**We have the
REPUTATION**

“Membership to Oklahoma Center for Nonprofits has been a great investment for our organization! Among my favorite membership perks are access to many online resources and the job listing page; discounts on training sessions, certifications, and consulting services; and most importantly, real relationships with nonprofit professionals around the state.”



*Dr. Angela Carter,
Tulsa Symphony*

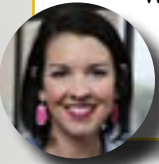
We have the Reputation of Excellence.

Most importantly, we have the reputation of excellence in Oklahoma. We stand by our nonprofits. We are there day and night. We truly care. And that care is evident in a reputation that stands above all others in Oklahoma who are dedicated to the missions, programs and services of the charitable sector.

We are always here for you.

“The value we’ve received from our membership at OKCNP has been beyond what we could have imagined. As we’ve grown and evolved we’ve utilized the helpline and coaching services from the Center.

We’re grateful to be able to access these crucial services to help our organization thrive.”



*Melissa Bryce Gamble,
The Global Foundation for Peroxisomal Disorders*

“I absolutely loved being a participant in the Standards of Excellence class. The ability of OKCNP to distill a LARGE amount of information into something easy to digest, understand, and discuss was a true feat. The material has also added greatly to our weekly Team Meetings. Each week I lead a 10-minute discussion about one of the standards and how it applies to C4K, how we meet that standard (or if we don’t), and how we can meet it.”



*Taylor Self
Oklahoma Cleats for Kids*

“[OKCNP’s Financial Services] has been a tremendous service that I honestly don’t know how we could have afforded it if it wasn’t for the Oklahoma Center for Nonprofits.”



*Joe Dorman
Oklahoma Institute for Child Advocacy*

CELEBRATION!



2017 Visions: A Celebration of Nonprofit Leadership
Danny Cavett, Toby Jenkins, Shannon Luper,
H.E. "Gene" Rainbolt, Dr. Robert L. Spinks

2018 Oklahoma Nonprofit Excellence (ONE) Awards
Tulsa Area United Way
Tulsa Community Foundation Award of Excellence Winner

OTHER HIGHLIGHTS

ADVOCACY

We continue to work closely with the National Council of Nonprofits at the federal level on charitable giving incentives, protection of the Johnson Amendment and education about the repercussions of tax reform on charitable nonprofits. At the state level, we work hard to act as a voice for the charitable sector to preserve advocacy rights for nonprofits and charitable giving incentives. Additionally, we give nonprofits a “seat at the table,” so that they don’t end up “on the menu.”



CHESAPEAKE COMMUNITY PLAZA Oklahoma City

Since officially taking ownership of the Chesapeake Community Plaza in August 2017, the Center is now home to nearly 30 nonprofit organizations thanks to this transformational gift from Chesapeake Energy. This year, we have already begun making significant improvements to the space, including plans for increased technology, to allow our nonprofit tenants greater access to the latest infrastructure.



LEGACY PLAZA Tulsa

Our Tulsa staff officially moved into our new office space at Legacy Plaza in June. We can't wait to serve our Tulsa-area nonprofits through this incredible vision of the Anne and Henry Zarrow Foundation. Our state-of-the-art training room will hold 60 people and, along with two smaller conference rooms, is available for our nonprofit members.

MEMBERSHIP LIST

OKCNP Members July 2017–June 2018

OKLAHOMA COUNTY

(Located in Oklahoma City unless otherwise indicated.)

[Artspace] at UNTITLED
A.I.D.S. Support Program, Inc.
Ability Connection Oklahoma
Academic Alliance Institute
Access Sports, Inc. - Luther
After School Spot, Inc.
Allied Arts
American Red Cross of Central Oklahoma
Anna's House Foundation - Edmond
Archdiocese of Oklahoma City
Areawide Aging Agency
Arise Ministries - Edmond
Arnall Family Foundation
Arthritis Foundation - Oklahoma Chapter
Aspiring Attitudes
Association of American Indian Physicians
Beautiful Dream Society
Bella Foundation
Belle Isle Enterprise Middle School
Best Friends of Pets
Boys & Girls Club of Oklahoma County
Branch15 Inc. - Bethany
BritVil Community Food Pantry
Building Firm Foundations For Life
Call Okie
Camp Fire Heart of Oklahoma, Inc.
Capitol Hill Main Street
CARE Center
CASA of Oklahoma County
Catalyst Behavioral Services
Catholic Charities of the Archdiocese of Oklahoma City, Inc.
Central Oklahoma Habitat for Humanity, Inc.
Central Oklahoma Humane Society
Central Oklahoma Workforce Investment Board, Inc
A Chance to Change Foundation
Character Council of Central Oklahoma - Edmond
Children's Center - Bethany
Children's Hospital Foundation
Children's Hospital Volunteers
Children's Visual Arts Academy - Edmond
City Care, Inc.
City Care's Whiz Kids
City Center Outreach, Inc.
CityRep, The Oklahoma City Repertory Theatre
Civic Center Foundation
Cleats for Kids

Community Action Agency of Oklahoma City and Oklahoma & Canadian Counties
Community Literacy Centers
Concordia Life Care Community
Consumer Credit Counseling Service - Bethany
Continental Societies - Edmond
Creative Oklahoma
Cristo Rey Oklahoma City Catholic High School
Crutch Community Foundation - Midwest City
Daily Living Centers of Oklahoma - Bethany
Dale Rogers Training Center
DCCCA, Inc.
DeadCENTER Film Festival
Dean McGee Eye Institute
Delta Dental of Oklahoma Foundation
Development By Design
Dialogue Institute Oklahoma
Dinner with Love Foundation
Dove Charter Public School Foundation
Down Syndrome Association of Central Oklahoma
Downtown Oklahoma City Initiatives, Inc.
EARC, Inc. - Edmond
Eden's Place Foundation - Edmond
Edmond Family Counseling - Edmond
Edmond Fine Arts Institute - Edmond
Edmond Historical Society and Museum - Edmond
Edmond Performing ARTS Center - Edmond
El Sistema Oklahoma, Inc.
Enduring Transitions
Energizing Earth Foundation
Environmental Federation of Oklahoma
Evolution Foundation - Edmond
Expressions Community Center
Feed the Children
Fields & Futures Foundation - Edmond
First Unitarian Church of Oklahoma City
Focus on Home
The Foundation for Oklahoma City Public Schools
Free To Live - Edmond
Freedom Oklahoma Education Campaign LTD
Freedom School Oklahoma City, Inc.
Friends of Edgemere School
Friends of the Capitol
Friends of the Mansion
Generation Citizen
Girl Scouts of Western Oklahoma

Girls on the Run of Central Oklahoma
Good Shepherd Ministries of Oklahoma
Greater Oklahoma City Chamber
Green Shoe Foundation - Edmond
HALO Project International
Harold Hamm Diabetes Center
Heartline, Inc.
Hearts for Hearing
Herland Sister Resources
Hope Center of Edmond
Hope Community Services, Inc.
Hope Is Alive Ministries Inc.
HopeHouse OKC
i2E, Inc.
ImFreeOk - Edmond
Impact Oklahoma, Inc.
Instant Library - Edmond
Institute of Economic Empowerment of Women
The Interfaith Alliance Foundation of Oklahoma
ITN Central Oklahoma - Guthrie
Jim Riley Outreach - Edmond
Joullian Foundation
Junior League of Oklahoma City
Keep Oklahoma Beautiful, Inc.
Kids' Chance of Oklahoma, Inc.
The KirkAngel Foundation
KOSU Public Radio
Latino Community Development Agency
Law Enforcement Chaplains Foundation
Leadership Oklahoma
Leadership Oklahoma City, Inc.
Lend-A-Hand Parent-Child Center for the Prevention of Child Abuse
Leukemia & Lymphoma Society
Life Change Academy
LifeTroops, Inc. - Edmond
Little Light Ministries
Love Like Crazy Foundation
Love Link Ministries Inc
LUKA International Foundation
Lynn Institute for Healthcare Research
Lyric Theatre of Oklahoma, Inc.
Maisha Project, Inc.
Make-A-Wish Foundation of Oklahoma
March of Dimes Foundation
Masonic Charity Foundation of Oklahoma - Edmond
Mayflower Medical Outreach
McBride Foundation
Mercy Health Foundation of Oklahoma
Metro Tech Foundation
Metropolitan Library System
Miles Against Melanoma OK
Mutt Misfits Society
NAMI Oklahoma

National Alliance on Mental Illness Edmond-North OKC
National Cowboy and Western Heritage Museum
National Downed Bikers Association
Neighborhood Services Organization, Inc.
Nexus Equine, Inc.
No Boundaries International - Edmond
NorthCare
Novo Ministries
OETA Foundation
OK Choctaw Tribal Alliance, Inc.
OKC Dodgers Baseball Foundation
OKC Dream Center
OKC National Memorial & Museum
OKC Police Athletic League, Inc.
Oklahoma Ag Mediation Program, Inc.
Oklahoma Arts Council
Oklahoma Association of Charitable Gift Planners
Oklahoma Association of Community Colleges - Midwest City
Oklahoma Baptist Homes for Children - OKC
Oklahoma Bar Foundation
Oklahoma Breastfeeding Resource Center
Oklahoma CART Association
Oklahoma Christian University
Oklahoma City Ballet
Oklahoma City Beautiful
Oklahoma City Community College Foundation
Oklahoma City Counseling II, Inc. - Edmond
Oklahoma City Family Justice Center
Oklahoma City Girls Art School
Oklahoma City Handbell Ensemble, Inc.
Oklahoma City Indian Clinic
Oklahoma City Metro Alliance
Oklahoma City Tool Library Incorporated
Oklahoma City's Adventure District
Oklahoma Coalition Against Domestic Violence
Sex
Oklahoma Community Theatre Association
Oklahoma Conference of Churches
Oklahoma Contemporary Arts Center/City Arts Center
Oklahoma Council on Economic Education - Edmond
Oklahoma Dental Foundation
Oklahoma Engineering Foundation
Oklahoma Farming and Ranching Foundation
Oklahoma Halfway House, Inc.
Oklahoma Hall of Fame, Inc.
Oklahoma Heart Hospital Research Foundation
Oklahoma Higher Education Heritage Society
Oklahoma Humanities
Oklahoma Institute for Child Advocacy

Oklahoma Interviewing Services, Inc.
Oklahoma Lawyers for Children
Oklahoma Lions Service Foundation
Oklahoma Literacy Coalition, Inc.
Oklahoma Messages Project
Oklahoma Physician Resource/Research Network
Oklahoma Primary Care Association
Oklahoma Public Employees Association
Oklahoma Public School Resource Center
Oklahoma Railway Museum
Oklahoma Safety Council
Oklahoma School of Science and Mathematics Foundation
Oklahoma Shakespeare in the Park
Oklahoma State Medical Association Alliance
Oklahoma State School Boards Association
Oklahoma Tobacco Settlement Endowment Trust
Oklahoma Urban & Community Forestry Council - Edmond
Oklahoma Youth Expo Inc.
Oklahoma Youth Hunting & Shooting Program, Inc.
Oklahoma Youth Orchestras
Oklahomans for Special Library Services
Oklahomans for the Arts
One World, Inc. - Edmond
Opportunities Industrialization Center of Oklahoma County
Other Options, Inc.
Painted Sky Opera
Parkinson Foundation of Oklahoma
Paseo Arts Association, Inc.
Patriots in Recovery Living
Pellow Outreach
Peppers Ranch - Edmond
Perpetual Motion Dance
Pet Food Pantry of Oklahoma City
Pivot, Inc.
Plaza District Association
Public Health Institute of Oklahoma
Putnam City Schools Foundation
Reach Out and Read Oklahoma
Reaching Our City, Inc.
Reaching Souls International
ReadWrite Center for Learning
REAL Ministries Foundation
Rebuilding Together OKC, Inc.
The Recovery Center
Red Earth, Inc.
Reduxion Theatre Company
Regional Food Bank of Oklahoma
Sally's List, Inc.
Salt and Light Leadership Training, Inc. (SALLT)
Santa Fe Family Life Center
SeeWorth Foundation - Edmond
ServeOK - Edmond
Sisu Youth, Inc.
SixTwelve Inc
Skyline Urban Ministry
South Oklahoma City Chamber of Commerce

Southern Nazarene University - Bethany
Sox of Love, Inc.
Special Care, Inc.
Spero Project
State Chamber of Oklahoma
Surayya Anne Foundation OKC
Teach for America - OKC
TEEM
Tenaciously Teal
Thick Descriptions
Trust Keith Foundation
Tree Bank Foundation
Trinity Legal Clinic of Oklahoma - Edmond
True North Ministries - Edmond
Upendo Kids, Inc. - Edmond
Uptown 23rd District Association
Urban Land Institute
Urban Mission, Inc.
USA Dance Chapter 5056 - Edmond
Warrior's Rest Foundation
Water4, Inc.
Wes Welker Foundation
Westminster Presbyterian Church
Windsor Area Business Group
WINGS, A Special Needs Community, Inc. - Edmond
Women Lead Oklahoma
World Book Bank, Inc.
World Neighbors, Inc.
WovenLife, Inc.
YMCA of Greater Oklahoma City
Youth Trumpet & Taps Corps - Edmond
YWCA of Oklahoma City

CENTRAL OKLAHOMA 2 (Canadian, Grady and McClain Counties)

21st Century Santa - Minco
CART House - El Reno
Center of Family Love - Okarche
Chickasha Public Schools
Foundation - Chickasha
Compassionate Hands, Inc. - Yukon
El Reno Blessing Baskets, Inc. - El Reno
Evany Clinic - Mustang
Faith Clinic - Yukon
Generation Why Co. - Yukon
Grady County Historical Society - Chickasha
House of Healing, Inc. - El Reno
Intervention & Crisis Advocacy Network - Chickasha
Oklahoma Institute for Civic Studies - Newcastle
Professional Photographers of Oklahoma - Blanchard
Resurrection House - Chickasha
Second Chance and Reentry Services - Mustang
University of Science and Arts of Oklahoma - Chickasha
Yukon Sharing Ministry - Yukon

CENTRAL OKLAHOMA 3 (Cleveland, Pottawatomie and Seminole Counties)

Ally's House - Norman
Bethesda, Inc. - Norman

MEMBERSHIP LIST *continued*

Bridges of Norman, Inc. - Norman
Cargo Ranch - Shawnee
Center for Children and Families, Inc. - Norman
Central Oklahoma Community Action Agency - Shawnee
Children's House Montessori School - Norman
Cross Timbers Resource Conservation and Development Association - McLoud
Eden Clinic - Norman
Family Promise of Shawnee
Flames to Hope, Inc. - Noble
Food and Shelter, Inc. - Norman
Gateway to Prevention & Recovery - Shawnee
Ground Zero Emergency Training Center - Norman
Growing Global LLC - Norman
Heartland Aeronautical Experience, Inc. - McLoud
Hillel at Oklahoma University - Norman
Jazz in June - Norman
JCV - Shawnee
KISS Institute for Practical Robotics - Norman
LCCP Youth Transportation & Development Services - Norman
Legacy Parenting Center - Shawnee
Loveworks Leadership - Norman
Mabee Gerrer Museum Of Art - Shawnee
McLoud School Foundation - McLoud
Monitor Oklahoma, Inc. - Oklahoma City
Moore Public Schools Foundation - Moore
Moore Youth and Family Services - Moore
National Weather Association - Norman
National Weather Association Foundation - Norman
Native Alliance Against Violence, Inc. - Norman
Norman Cultural Connection - Norman
Norman Firehouse Art Center - Norman
Norman Music Alliance - Norman
Oklahoma Academy for State Goals - Norman
Oklahoma Association on Problem and Compulsive Gambling - Norman
Oklahoma Coalition for Reproductive Justice - Oklahoma City
Oklahoma People First - Norman
Oklahoma Prevention Policy Alliance - Shawnee
One Safe Place Family Justice Center - Shawnee
Oscar B. Jacobson Foundation - Norman
Ostomy 2-1-1 Incorporated - McLoud
PFLAG Norman - Norman
Pioneer Library System Foundation - Norman

Professional Oklahoma Educators - Noble
Project Outreach - Norman
Project Safe - Shawnee
Seminole Nation Museum - Wewoka
Seminole State College Educational Foundation - Seminole
Senior Citizens of Shawnee, Inc. - Shawnee
Serve More Inc. - Oklahoma City
Shawnee Family YMCA - Shawnee
Shawnee Little Theatre - Shawnee
South Central CASA of Oklahoma, Inc. - Norman
St. Crispin's Conference Center + Camp - Wewoka
Techlahoma Foundation - Oklahoma City
Traci R. Sykes Foundation - Norman
Transition House, Inc. - Norman
Wildcare Foundation - Noble
Women's Resource Center - Norman
Youth and Family Resource Center, Inc. - Shawnee

CENTRAL OKLAHOMA 4 (Lincoln, Logan and Payne Counties)

CASA for Kids - Stillwater
Central Oklahoma Camp & Conference Center - Guthrie
Cushing Secure Haven - Cushing
Friends of Shawnee Animals, Inc. - Meeker
God's Food Bank - Guthrie
Greyson's Advocates - Stillwater
Love In the Name of Christ of Greater Cushing - Cushing
Oklahoma FCCLA Alumni & Associates - Stillwater
Oklahoma FFA Foundation - Stillwater
Oklahoma WONDertorium - Stillwater
Pollard Theatre - Guthrie
Saville Center - Stillwater
Shiloh's Place, Inc. - Stillwater
Stillwater CARES - Stillwater
Stillwater Life Services - Stillwater
Stillwater Multi Arts Center - Stillwater
Turning Point Ranch Association - Stillwater
Valley Hope - Cushing
Visit Stillwater OK, Inc.

NORTHWEST COUNTIES

Buffalo Grass Arts Institute - Clinton
Mission House, Inc. - Clinton
Opportunities, Inc. CAA - Watonga
Panhandle Services for Children - Guymon
Plains Indians and Pioneers Museum - Woodward

Southwest Intermediary Finance Team (SWIFT) - Weatherford
Southwestern Oklahoma State University Foundation, Inc. - Weatherford
Weatherford Food & Resource Center - Weatherford
Woodward Arts & Theatre Council, Inc. - Woodward

NORTH CENTRAL COUNTIES (Garfield, Grant, Kay, Kingfisher and Noble Counties)

4RKids Foundation - Enid
Autri Technology Center - Enid
Bennie's Barn - Enid
Cherokee Strip Community Foundation - Enid
The Children's Fund - Ponca City
Community Care Auto Repair, Inc. - Ponca City
Community Health Foundation of Ponca City - Ponca City
Edwin Fair Community Mental Health Center - Ponca City
Enid LGBT Coalition - Enid
Enid Public School Foundation - Enid
Enid Regional Development Alliance - Enid
Enid Symphony Association - Enid
Green Connections, Inc. - Oklahoma City
Hedges Regional Speech & Hearing Center - Enid
Hospice of North Central Oklahoma, Inc. - Ponca City
Leonardo's Children's Museum - Enid
Living Hope Pregnancy Center - Ponca City
Loaves and Fishes of Northwest Oklahoma Inc. - Enid
Main Street Enid, Inc. - Enid
Marland Children's Home - Ponca City
Oklahoma Rodeo Pageants Council, Inc. - Enid
Opportunity Center, Inc. - Ponca City
Park Avenue Thrift - Enid
Peachtree Landing Inc - Ponca City
Phillips University Legacy Foundation - Enid
Ponca City Arts and Humanities Council - Ponca City
Ponca City Main Street - Ponca City
Positive Impact of Oklahoma Corporation - Ponca City
RSVP Of Enid and North Central Oklahoma, Inc. - Enid
Rural Health Projects - Enid
United Way of Enid & NW Oklahoma - Enid
Wheatheart Nutrition Project - Blackwell
YWCA Enid - Enid

NORTH EAST COUNTIES

(Counties in the North East region excluding Tulsa County.)

Agapé Mission of Bartlesville - Bartlesville
Bartlesville Community Foundation - Bartlesville
Bartlesville Education Promise - Bartlesville
Bartlesville Regional United Way Bartlesville Symphony Orchestra - Bartlesville
Boys & Girls Club of Bartlesville - Bartlesville
Bridges of Hope Delaware County - Grove
Caring Community Friends - Sapulpa
CASA for Children - Muskogee
CASA of Cherokee Country - Tahlequah
Cherokee National Historical Society - Tahlequah
Children's Musical Theatre Bartlesville - Bartlesville
Claremore Senior Citizens Center - Claremore
Connors Development Foundation - Warner
The Cottage - Bartlesville
Creek County Literacy Program - Sapulpa
Deep Fork Community Action Foundation, Inc. - Okmulgee
Dwight Presbyterian Mission, Inc. - Vian
Eastern Oklahoma Health Care Coalition, Inc. - Muskogee
George Miksch Sutton Avian Research Center - Bartlesville
Gospel Rescue Mission - Muskogee
Grand Lake Mental Health Center, Inc. - Nowata
Grand Nation Inc. - Vinita
Great Expectations - Tahlequah
Greater Muskogee Area Chamber of Commerce - Muskogee
Green Country Behavioral Health Services - Muskogee
Har-Ber Village Foundation - Grove
Help-In-Crisis, Inc. - Tahlequah
His House Outreach Ministries - Claremore
Home of Hope - Vinita
Hopestone Cancer Support Center of Bartlesville, Inc. - Bartlesville
INCOR - Muskogee
Indian Women's Pocahontas Club - Claremore
Journey Home - Bartlesville
Kids' Space Child Advocacy Center - Muskogee
Lake Area United Way, Inc. - Muskogee
Main Street Muskogee, Inc. - Muskogee
Mayes County Hope Coalition - Pryor
Muskogee (Creek) Nation Scholarship Foundation Program - Okmulgee
Muskogee City County E911 Trust Authority - Muskogee

Muskogee Little Theatre - Muskogee
Muskogee War Memorial - Muskogee
MUTUAL Girls Club of Bartlesville - Bartlesville
Neighbors Building Neighborhoods - Muskogee
Northeastern State University Foundation, Inc. - Tahlequah
Nowata CAN - Nowata
OK Mozart - Bartlesville
Oklahoma Emergency Response Team - Miami
Okmulgee County Family Resource Center - Okmulgee
Project Hope Worldwide - Tulsa
Ray of Hope Advocacy Center, Inc. - Bartlesville
ROCMND Area Youth Services - Vinita
Rogers County Volunteers for Youth, Inc. - Claremore
SAC Nutrition - Sallisaw
Safenet Services - Claremore
Samaritan Counseling and Growth Center - Bartlesville
Sapulpa Historical Society - Sapulpa
Spavinaw Youth & Neighborhood Center - Spavinaw
Tahlequah BEST Community Coalition, Inc. - Tahlequah
Tri County Tech Foundation - Bartlesville
Wagoner Switch District - Wagoner
William W. Barnes Childrens Advocacy Center - Claremore
Women in Safe Homes (WISH) - Muskogee
Woody Guthrie Folk Festival / Oklahoma Film + Music Office - Paden
YME (Youth Mission Education) Foundation - Catoosa

TULSA COUNTY

(Located in Tulsa unless otherwise indicated.)

12 & 12, Inc.
1st Step Male Diversion Program
501 Tech.net
Ability Resources, Inc
All Souls Unitarian Church
ALS Patient Services Outreach - Broken Arrow
Alzheimer's Association
American Association of Petroleum Geologists Foundation (AAPG)
American Indian Chamber of Commerce - Broken Arrow
Arts & Humanities Council of Tulsa
Association of Fundraising Professionals, Eastern Oklahoma Chapter
Big Brothers and Big Sisters of Oklahoma-Tulsa
Bixby Community Outreach Center - Bixby
Breast Cancer Assistance Program
Broken Arrow Seniors - Broken Arrow

Building All Children
Car Care Clinic, Inc.
Center for Employment Opportunities
Child Abuse Network, Inc.
Child and Adolescent Program Enrichment Services
Circle Cinema Foundation
City of Broken Arrow CVB - Broken Arrow
City Year Tulsa
Clarehouse
Coffee Bunker
Community Food Bank of Eastern Oklahoma
Community Health Connection, Inc.
Community HigherEd
Community Service Council
CREOKS Behavioral Health Services
Crime Prevention Network
Crossroads Hospice Charitable Foundation
Crosstown Learning Center
DaySpring Villa Women & Children's Shelter, Inc. - Sand Springs
Domestic Violence Intervention Services
Down Syndrome Association Of Tulsa
Eastern Oklahoma Donated Dental Services
Education for Scholars
Empower Families Foundation
Empowered Women of God International, Inc. - Bixby
Engineers in Action
Family & Children's Services
Family Hope House
Family Promise of Tulsa County
Family Safety Center
First Tee of Tulsa, Inc.
Flint Family Foundation
Foundation for Tulsa Schools
Gateway Foundation - Broken Arrow
Girl Scouts of Eastern Oklahoma Global Foundation for Peroxisomal Disorders
Global Gardens
Go Nuts! Lunch Club Inc.
Gold4Kids Cancer Foundation of Tulsa - Bixby
Good Samaritan Health Services
Greenwood Community Development Corporation
Griffin Promise - Broken Arrow
Harmony Project Tulsa, Inc.
Heart of Route 66 Auto Museum, Inc.
Home Builders Association of Greater Tulsa HBA
Charitable Foundation
HOPE
Hospice of Green Country, Inc.
Human Skills and Resources
Hunger Free Oklahoma
Improving Lives
Interlinked Foundation
International Council for Machinery Lubrication - Broken Arrow
Iron Gate at Trinity, Inc.
Isaiah 58, In His Service, Inc.
Islamic Council of Oklahoma

MEMBERSHIP LIST *continued*

James, Inc.
 Jenks Public Schools Foundation
 - Jenks
 John Hope Franklin Center for Reconciliation, Inc.
 Joy in the Cause
 Joys To The World, Inc.
 Junior Achievement of Oklahoma
 Just the Beginning
 Kitchen 66
 Launch Outreach - Jenks
 Leadership Tulsa
 Learn to Code, Inc. - Sand Springs
 Let Them Lead
 LIFE Senior Services, Inc.
 Lindsey House
 Little Light House
 Mainsprings
 Martha's Foundation
 Meals on Wheels of Metro Tulsa
 Mental Health Association Oklahoma
 Mingo Valley Christian School, Inc.
 Morton Comprehensive Health Services, Inc.
 Muslims4Mercy - Broken Arrow
 NAMI-Tulsa
 National Association of Legal Assistants
 Neighbors Along the Line
 New Hope Oklahoma, Inc.
 Oasis Adult Day Services - Bartlesville
 Oklahoma Alliance for Manufacturing Excellence
 Oklahoma Aquarium Foundation - Jenks
 Oklahoma Center for Community and Justice
 Oklahoma Community Support Coalition
 Oklahoma Hemophilia Foundation - Owasso
 Oklahoma Performing Arts, Inc.
 Oklahoma Policy Institute
 Oklahoma Project Woman
 Oklahoma Public Fleet Management Association
 Oklahoma Recycling Association
 Oklahomans for Equality
 Operation Aware of Oklahoma, Inc.
 Outreach Education Initiative
 Owasso Community Resources - Owasso
 Parkside Psychiatric Hospital & Clinic
 Pathways Adult Learning Center
 Pencil Box
 Pets Helping People
 Philbrook Museum of Art
 A Pocket Full of Hope
 Poetic Justice Inc.
 Pregnancy Resource Center of Owasso - Owasso
 Project Special Courage
 Random Acts of Purpose
 Reading Partners
 Restore Hope Ministries
 Ronald McDonald House Charities of Tulsa, Inc.
 Rose Rock Opera Institute

Rotary Club of Tulsa
 RSVP of Tulsa
 San Miguel Middle School of Tulsa
 Sand Springs Community Services, Inc. - Sand Springs
 Sand Springs Cultural & Historical Museum - Sand Springs
 Sand Springs Education Foundation - Sand Springs
 Shiloh Baptist Church
 Sister India, Ltd
 Smart Growth Tulsa
 Spay Oklahoma
 Special Olympics Oklahoma
 St. Joseph Monastery
 Stand in the Gap Ministries
 StoneSoup Community Venture
 Street School, Inc.
 Supporters of Families with Sickle Cell
 Surayya Anne Foundation - Broken Arrow
 Sustainable Tulsa
 Sweet Adelines International
 TARC
 Together Tulsa
 Total Source for Hearing-loss and Access
 Town and Country School
 Tulsa Advocates for the Protection of Children
 Tulsa Air and Space Museum & Planetarium
 Tulsa Art Deco Museum
 Tulsa Artist Fellowship
 Tulsa Audubon Society
 Tulsa Ballet
 Tulsa Botanic Garden
 Tulsa Camerata
 Tulsa Campaign to Prevent Teen Pregnancy
 Tulsa CARES
 Tulsa CASA, Inc.
 Tulsa Children's Museum
 Tulsa Community College Foundation
 Tulsa Community Foundation
 Tulsa County Medical Society Foundation
 Tulsa Day Center for the Homeless
 Tulsa Debate League
 Tulsa Dream Center
 Tulsa Educare
 Tulsa Fire Museum, Inc.
 Tulsa Foundation for Architecture
 Tulsa Garden Center
 Tulsa Girl's Art School
 Tulsa Glassblowing School
 Tulsa Global Alliance
 Tulsa Habitat for Humanity
 Tulsa Hills Youth Ranch
 Tulsa HUB Syndicate
 Tulsa International Mayfest
 Tulsa Library Trust
 Tulsa Literary Coalition
 Tulsa Modern Movement
 Tulsa Newcomer Services, Inc.
 Tulsa Opera
 Tulsa Pop Kids, Inc.
 Tulsa Regional STEM Alliance
 Tulsa SPCA

Tulsa Symphony Orchestra
 Tulsa Tough
 Tulsa Youth Symphony
 Union Schools Education Foundation
 Unlock Freedom, Inc.
 Upstream
 Voice of China and Asia Missionary Society
 Volunteers of America Oklahoma WellOK
 Woody Guthrie Center
 Working Together: Simple Faith Ministries, Inc.
 World Baseball Outreach
 Young Businessmen of Tulsa
 Youth at Heart

SOUTH WEST COUNTIES

Altus Armed Services YMCA - Altus AFB
 Altus Christian Academy - Altus
 Anadarko Chamber Of Commerce - Anadarko
 Apex Inc - Anadarko
 Armed Services YMCA of Lawton Fort Sill - Lawton
 Center For Creative Living - Lawton
 Comanche County Memorial Foundation - Lawton
 Corn Bible Academy - Corn
 Family Promise of Lawton - Lawton
 General Tommy Franks Leadership Institute and Museum - Hobart
 Helping Women Win Inc. - Lawton
 Lawton Philharmonic - Lawton
 Let Freedom Reign Foundation - Lawton
 Marie Detty Youth & Family Service Center - Lawton
 Museum Of The Great Plains - Lawton
 Oklahoma Swimming, Inc. - Altus
 Operation C.A.R.E. (Christians Assisting Resources Encouraging) Ministries - Altus
 Shortgrass Arts and Humanities Council - Altus
 Southwest Oklahoma Community Action Group - Altus
 Southwestern Youth Services - Altus
 Teen Court, Inc. - Lawton
 United Way of Southwest Oklahoma - Lawton
 Western Oklahoma Family Care Center - Elk City
 Westview Boys Home - Hollis
 Wichita Mountains Prevention Network, Inc. - Lawton

SOUTH CENTRAL COUNTIES

20th District Drug Court - Ardmore
 Ardmore Beautification Council - Ardmore
 Ardmore Family Literacy -

Ardmore
 Ardmore Literacy Leadership - Ardmore
 Ardmore Main Street Authority
 Ardmore Village - Ardmore
 Boys & Girls Club of Carter County - Ardmore
 Broadway House - Ardmore
 Chickasaw Country Marketing Association - Sulphur
 Chisholm Trail Arts Council - Duncan
 Chisholm Trail Heritage Center - Duncan
 Community Children's Shelter and Family Service Center - Ardmore
 Family Shelter of Southern Oklahoma - Ardmore
 FC Serve Central Inc. - Duncan
 Food and Resource Center of South Central Oklahoma - Ardmore
 Gene Autry Oklahoma Historical Society - Gene Autry
 Girls on the Run of Southern Oklahoma - Ardmore
 Good Shepherd Community Clinic - Ardmore
 Grace Center of Southern Oklahoma - Ardmore
 Hill Top Equine Therapy - Ardmore
 Lighthouse Behavioral Wellness Center - Ardmore
 LostSoldier's Workshop Foundation - Comanche
 Restoring Lives - Ardmore
 Samaritans of Pauls Valley - Pauls Valley
 SpiritWind Kidz Ranch, Inc. - Stratford
 Think Ability, Inc. - Duncan
 United Way of South Central Oklahoma - Ardmore
 United Way Of Stephens County, Inc - Duncan
 Women's Haven - Duncan
 Working Cowboy, Inc - Gene Autry
 Youth Services for Stephens County, Inc. - Duncan

SOUTH EAST COUNTIES

22nd Judicial District CASA, Inc. - Ada
 Ada Area Chamber of Commerce - Ada
 Ada Homeless Services - Ada
 Ada Regional United Way - Ada
 Ada Senior Care Center - Ada
 Big Five Community Services - Durant
 Blue Winds Dancing Sanctuary, Inc. - Indianola
 Camp Hope Boys Ranch - McAlester
 Chahta Foundation - Durant
 Choctaw/Pushmataha County Youth Services, Inc. - Hugo
 Durant Historical Society - Durant
 E-Angels, Inc. - McAlester
 East Central University Foundation - Ada
 Endangered Ark Foundation -

Hugo
 Family Crisis Center, Inc. - Ada
 Friends of the Heritage Horse Foundation Herds - Antlers
 Good Samaritan Outreach for Men - McAlester
 Grace Cottage Pregnancy Crisis Center - Poteau
 HMA Foundation - Francis
 Hope House of McAlester - McAlester
 Ice House Youth Project - McAlester
 Imagine Durant - Durant
 INCA Community Services - Tishomingo
 International Order of the Rainbow for Girls - McAlester
 Kiamichi Opportunities - Hugo
 Leap O'Faith Therapeutic Riding Center - Ada
 LeFlore County Historical Society - Poteau
 Leflore County Youth Services, Inc - Poteau
 Little Dixie Community Action Agency - Hugo
 Mama T's B&B Homeless Shelter - Ada
 Marshall County Chamber of Commerce - Madill
 McCall's Chapel School, Inc. - Ada
 Mercy Health Foundation Ada - Ada
 Murray State College Foundation - Tishomingo
 New Life House - Durant
 The Oaks RSC - McAlester
 Oklahoma Forest Heritage Center - Idabel
 Oklahoma Parents Center - Holdenville
 One Heartbeat Ministries - Poteau
 Pervasive Parenting Center - Panama
 Pride in McAlester - McAlester
 Rural Enterprises of Oklahoma - Durant
 Southeastern Oklahoma State University Foundation - Durant
 Southeastern Public Library System of Oklahoma - McAlester
 Southern Oklahoma Addiction and Recovery, Inc. - Ada
 Southern Oklahoma Nutrition Program - Ada
 Under One Roof - Eufaula
 Unity Point Counseling & Recovery Center, Inc. - Ada

OUT OF STATE

Behavioral Concepts, Inc. - Sherman, Texas
 Cancer Support Foundation - Fort Smith, Arkansas
 Preferred Family Healthcare Inc. - Kirksville, Missouri
 South Sky Transitions Inc. - Dallas, Texas
 Texoma Health Foundation - Denison, Texas

The above list reflects memberships during July 2017-June 2018.



CHAIRMAN'S CIRCLE LIST

Thank you to the generous support of our Chairman's Circle.

SUSTAINER

Chesapeake Energy Corporation

Potts Family Foundation

The Anne & Henry Zarrow Foundation

DIAMOND

The H.A. and Mary K. Chapman Charitable Foundations

The Chickasaw Nation

Inasmuch Foundation

George Kaiser Family Foundation

Donald W. Reynolds Foundation

PLATINUM

Arnall Family Foundation

Boeing

Chahta Foundation

Cherokee Nation

Choctaw Nation of Oklahoma

Express Employment Professionals

Herman Kaiser Foundation

Kirkpatrick Foundation

Moran Family Foundation

Sarkeys Foundation

GOLD

American Fidelity Foundation

The Anschutz Foundation

Arvest Bank

Avedis Foundation

BancFirst and Gene Rainbolt

Bank of the West

The Barnett Family Foundation

Blue Cross and Blue Shield of Oklahoma

Devon Energy Corporation

E. L. and Thelma Gaylord Foundation

Hillcrest Medical Center

The Journal Record

Jean and David McLaughlin

Polly and Larry Nichols

The Oklahoman Media Company

Public Service Company of Oklahoma

QuikTrip Corporation

SandRidge Energy

Valley View Foundation

The Walton Family Foundation

Williams

SILVER

Sanford and Irene Burnstein Foundation

Commerce Bank

Crowe & Dunlevy

Foundation Management Inc.

Patsy Gaberino Carey

McCasland Foundation

Ralph & Frances McGill Foundation

The Samuel Roberts Noble Foundation

OKC GOOD

Oklahoma Blood Institute

The Oxley Foundation

Jess L. and Miriam B. Stevens Foundation

Marnie and Clayton Taylor

University of Oklahoma Foundation

BRONZE

Cox Communications

Tricia Louise Everest

The Gelvin Foundation

Oklahoma City University

Oklahomans for Equality

Oklahoma Gazette
Oklahoma Watch
OU Medicine
Karen and Mike Samis
SONIC, America's Drive-In
Tulsa World Media Company
Barbara and Stanton L. Young
Foundation

COPPER

Judith & Jean Pape Adams
Charitable Foundation
Anonymous
AT&T-Oklahoma
Billie and Howard Barnett
Daniel Billingsley
Lori and Jeff Blumenthal
Boy Scouts of America Last
Frontier Council
Karen and Bob Browne
Jerry Caughman and Lacey Horn
Coca-Cola Southwest Beverages
Sam and Rita Combs/COMSTAR
Advisors
Janetta Cravens
Janet and Frederick Drummond
Susan and Carl Edwards
First National Bank of Oklahoma
/Pat Rooney
John Groendyke
Jean and Bob Harbison
Beth and David Harris
Harry H. Diamond, Inc.
Pamela and Carlos Johnson
Don A. Karchmer
The Kerr Foundation
Kirkpatrick Bank
Jenee and Darren Lister
Love's Travel Stops and
Country Stores
Ralph Mason
NBC Oklahoma
Newmark Grubb Levy Strange Beffort
NORDAM
Shannon and Travis O'Doherty
OG&E Energy Corp.
Oklahoma City Thunder
ONE Gas
The Payne Family
Kathy and Steve Potts
Kelly Sachs
Shelley Sanders
Sara's Project
The Simmons Foundation

Dr. Robert L. Spinks
Tapstone Energy
Brooke and Dru Townsend
Jon Trudgeon, Sr.
Tulsa County Medical Society
Foundation
Dr. Frank Wang
Jerome Westheimer Family
Foundation
Williams, Box, Forshee & Bullard, P.C.

PRESIDENT'S CIRCLE

12 & 12, Inc.
Ackerman McQueen Advertising
Mo Anderson
Dr. and Mrs. Jon Axton
Barbara and Dan Batchelor
Gerry and Ken Bonds
Becky and Jim Buchanan
Casady School
The Children's Center
Jodi Cline
ConocoPhillips
Kathie G. Coyle
Dean McGee Eye Institute
Feed the Children
Deena Fisher
The Honorable and Mrs. John Ford
Girl Scouts of Eastern Oklahoma
HoganTaylor LLP
Kristin Holland
Julie and Craig Knutson
Charlotte Lankard
Mandy Leemhuis
Carol and Mark Lester
Meals on Wheels of Metro Tulsa
Jenni and Jeff Moen
Nonprofit Solutions, PC
Parkside Psychiatric Hospital & Clinic
The Pencil Box
James Pickel
Spradling, Kennedy and McPhail, LLP
Mary and Rob Stallings
Afshean Talasaz
Tulsa Area United Way
United Way of Central Oklahoma
Erin Webb
Carol and Mark Williams

**List as of July 2018*



FINANCIAL STATEMENT

Cash and Cash Equivalents	624,785.00
Other Current Assets	54,483.00
Total Current Assets	679,268.00
Other Assets	3,826,720.00
Total Assets	4,505,988.00
Current Liabilities	154,913.00
Net Assets	4,351,075.00
Total Liabilities and Assets	4,505,988.00

Revenue

Program Service Fees	929,773.00
Contributions and Grants	1,232,229.00
Contribution of Donated Property	3,700,000.00
Rental Income	348,425.00
Other Revenues	17,874.00
Total Operating Revenue	6,228,301.00

Expenses

Program Expenses	1,838,244.00
Building Expenses	334,859.00
Management and General Expenses	179,266.00
Fundraising Expenses	184,283.00
Total Operating Expenses	2,536,652.00



2017-2018 BOARD OF DIRECTORS

Mark Williams
Board Chair
Craig Knutson
Chair-elect
Jodi Cline
Secretary
Lacey Horn
Treasurer

Seth Fairchild
Deena Fisher
John Ford
John Harper
David Harris
Danielle Hoeltzel
Kristin Holland
Carlos Johnson
Steve Kerr
Kelly Krahl
Mandy Leemhuis

Tony LoPresto
Jeff Moen
Kathy Potts
Shelley Sanders
Deborah Schramm
Mary Stallings
Afshean Talasaz
Brooke Townsend
Johnna R. Walker
Kathy L. Williams

HONORARY BOARD

Pat Potts, Founder
Howard G. Barnett, Jr.
W. Kenneth Bonds
Lou Kerr
Joe Moran
Polly Nichols
Jon Trudgeon, Sr.

OKCNP STAFF

Marnie Taylor
President and CEO

James Arnold
Vice President of Finance and Accounting

Daniel Billingsley
Vice President of External Affairs

Janetta Cravens
Vice President of Programs

Kristi Birk
Executive Assistant to President and CEO

Liz Bowman
Shared Services Coordinator

Trent Brewer
Manager of External Affairs

Johnny Buschardt
Senior Manager for Program Delivery

Gabrielle Butler
Senior Director of Development

Matt Cordray
Director of Operations

Sara Jane DelMonte
Manager of Member Services

Mandy Fair
Director of Development

Jana Ruth Harkins
Director of Shared Services

Debra Hull
Development Operations Manager

Dakota Leftwich
Vista Program Analyst

Kim Leveridge
Director of Learning and Professional
Development

Josh Lunsford
Director of Communications

Malisa Peterson
Part-time Program Coordinator

Katie Spaulding
Standards for Excellence Manager

Tessa Traxler
Manager of Training Administration

Erin Webb
Shared Services Coordinator

Jerry Wright
Director of Consulting



OKCNP @ CHESAPEAKE COMMUNITY PLAZA

720 W. Wilshire Blvd., Suite 115
Oklahoma City, OK 73116
Office: (405) 463-6886
Fax: (405) 463-6888

OKCNP @ LEGACY PLAZA

5330 East 31st Street, Suite 200
Tulsa, OK 74135
(918) 392-7984

www.OKCNP.org
1 (800) 338-1798