

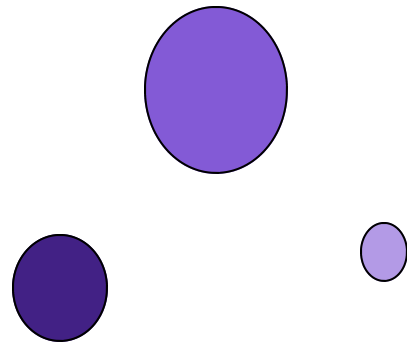
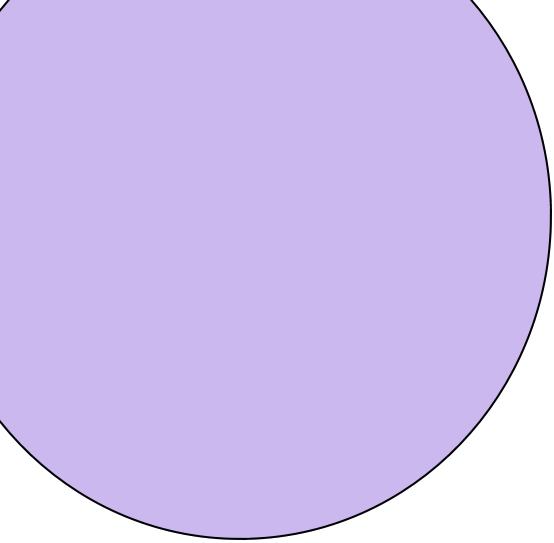
Annual Report 2007-2008



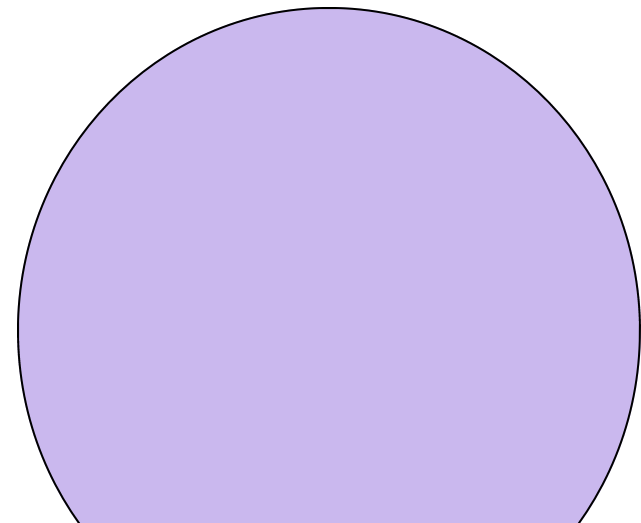
coming full circle

OKLAHOMA
CENTER
FOR NONPROFITS™
Building better communities through effective nonprofits.

we enable them. you enable us.



*Building better communities
through effective nonprofits.*



Oklahoma has always been an extraordinary place, with very extraordinary people. This year in particular I am reminded of the kind of community with which I am blessed. In the midst of tough economical times, Oklahomans have chosen to see beyond their own situations and continue to reach out and serve their communities, and for that, I am grateful and yet again humbled.

Due to this continued support, it has been a year for the books here at the Center. We hosted our first annual Oklahoma Non-profit Excellence (ONE) Awards, increased our membership base and increased the number of trainings we provide.

Our mission has been lived out and our services have carried on thanks to the faithful and generous hearts of our supporters. We look forward to another year of changed lives and changed communities as we continue to resource and support the organizations in our state that continue to make things happen!



*Debby Hampton,
President/CEO*

Center Membership Network

A Chance to Change•Aim High Academy•Allele Ministries•Allied Arts•Altus Christian Academy•Alzheimer’s Association Oklahoma and Arkansas Chapter•American Heart Association•American Lung Association of Oklahoma•American Red Cross Heart of Oklahoma Chapter•American Red Cross of Central Oklahoma•American Red Cross of Oklahoma—Canadian Valley Chapter•American Therapeutic Riding Center•The Anna’s House Foundation•Ardmore Beautification, Inc.•Areawide Aging Agency Inc.•Arthritis Foundation-Oklahoma Chapter•Arts Council of Oklahoma City•Association of Fundraising Professionals•Big Brothers Big Sisters of Greater Oklahoma City•Booker T. Washington Center•Boy Scouts of America-The Last Frontier Council•Boys and Girls Club of Oklahoma City, Inc.•Brain Vantage•The Bridges Foundation•Broken Arrow Convention and Visitors Bureau•Broken Arrow Neighbors• Shelley Butler-Allen•Calm Waters Center for Children and Families•Camp Fire USA-Heart of Oklahoma Council•Camp Loughridge•Cancer Research Patient Assistance Fund•Captiol Hill Shalom Initiative, Inc.•CASA for Children, Inc.•CASA of Oklahoma County•Catalyst Behavioral Services (Drug Recovery, Inc.)•Catholic Charities of Oklahoma City•Catholic Charities of Tulsa•Celebrations! Educational Services Inc.•The Center for Individuals with Physical Challenges•Central Oklahoma Integrated Network System, Inc.•Cherokee National Historical Society•Child Abuse Network, Inc.•Children’s Medical Research Institute•Christian Services of Oklahoma•Christmas Connection•Cimarron Circuit Opera Company•Circle Cinema Foundation•Citizen CPR The Critical Link, Inc.•Citizens Caring for Children•City Arts Center•City Care’s Whiz Kids•Civic Music Association of Oklahoma City•Coffee Creek Riding Center•Community Care of Sapulpa•Community Development Support Association, Inc.•Community Health Centers, Inc.•Community Literacy Centers•Consumer Credit Counseling Service•Cookson Institute•Crime Commission Inc.•Daily Living Centers, Inc.•Dale Rogers Training Center•DaySpring Villa•D-Dent•Deaconess Pregnancy and Adoption Services•Diabetes Solutions-OK•Domestic Violence Intervention Services•Downtown Oklahoma City Initiatives, Inc.•DREAM Institute•Dress for Success Tulsa•Easter Seals Oklahoma•Eastern Oklahoma Donated Dental Services, Inc.•Edmond Community Chorale•The Education and Employment Ministry•Emergency Infant Service•Employment and Residential Centers (EARC)•Engineers in Action•Enid Community Foundation•Evergreen Presbyterian Ministries, Inc.•Executive Serve Corps of Central Oklahoma•Feed the Children, Inc.•Folds of Honor Foundation•Girl Scouts-Western Oklahoma, Inc.•Girl Scouts of Eastern Oklahoma•Global Gardens•Global Training Network•Golden Rule Industries of Muskogee, Inc.•Grace Cottage Crisis Center•Greenwood Cultural Center•Guy Fraser Harrison Academy•Harn Homestead and 1889er Museum•Heartline, Inc.•Hedges Regional Speech and Hearing•HelmsZAR Challenge Course•Higher Education Alumni Council of Oklahoma•Hillcrest HealthCare Systems•Home of Hope, Inc.•HOPE Academy•Hospice of North Central Oklahoma, Inc.•Hospice of Oklahoma County•The Hospitality House of Tulsa, Inc.•INCOR•Indian Health Care Resource Center•Infant Crisis Service, Inc.•International Association of Cold Case Investigators•International Photography Hall of Fame and Museum•Iron Gate Trust•John Keys Speech and Hearing Center•Keep Oklahoma Beautiful•Kathy Keith•Kelly B. Todd CP Center•Kiamichi Youth Services•L.M. Tolliver Alternative Care Center•Latino Community Development Agency•Lawton Philharmonic Society•Leadership Oklahoma City•Legal Aid Services of Oklahoma, Inc.•Leonardo’s Discovery Warehouse•Little Dixie Community Action Agency, Inc.•David Loftis•Logan Medical Center Foundation•Love Link Ministries•Lutheran High School Association•Make-A-Wish Foundation of Oklahoma•Margaret Hudson Program•Marginal Well Commission•McAlester Scottish Rite Charitable and Educational Foundation•Meals on Wheels of Metro Tulsa•Medical Missions Response•Mental Health Association of Central Oklahoma•Metropolitan Better Living Center•



Metropolitan Tulsa Urban League●Janice Meyers-Weibe●MONARCH, Inc.●Moore Youth and Family Services●Ms. Deborah Bright●Muskogee County Child Advocacy Center●Muskogee Day Nursery●Muskogee Nonprofit Research Center●National Indian Monument and Institute, Inc.●Neighborhood Alliance, Inc.●Neighborhood Services Organization●NorthCare●Northeastern Oklahoma Affiliate of Network for Strength●OACEP●OKC Beautiful●The Oklahoma Academy●Oklahoma Arts Council●Oklahoma Arts Institute●Oklahoma Association of Municipal Attorneys●Oklahoma Baptist Homes for Children – Owasso●Oklahoma Bioscience Association●Oklahoma Blood Institute●Oklahoma Brain Tumor Foundation●Oklahoma Business Ethics Consortium●Oklahoma CASA Association, Inc.●Oklahoma Center for Arts Education●Oklahoma Center for Consumer and Patient Rights●Oklahoma City Indian Clinic●Oklahoma City National Memorial and Museum●Oklahoma City Philharmonic●Oklahoma City Public Schools Foundation, Inc.●Oklahoma Community Health Services, Inc.●Oklahoma Community Institute●Oklahoma Community-Based Providers●Oklahoma Council on Economic Education●Oklahoma Dental Foundation●Oklahoma Foundation for the Disabled●Oklahoma Goodwill Industries●Oklahoma Halfway House●Oklahoma Health Care Workforce Center●Oklahoma Humane Society●Oklahoma Jazz Hall of Fame●Oklahoma League for the Blind●Oklahoma Lions Eye Bank●Oklahoma Medical Research Foundation●Oklahoma Museums Association●Oklahoma Outreach Foundation●Oklahoma Parent Information & Resource Center●Oklahoma Parent’s Center, Inc.●Oklahoma Partnership for School Readiness Foundation, Inc.●Oklahoma PTA●Oklahoma Safe Kids Coalition●Oklahoma Substance Abuse Services Alliance●Oklahoma Youth Symphonies, Inc.●Oklahoma Zoological Society●Oklahomans for Equality●Operation Aware of Oklahoma, Inc.●Owasso Community Resources●Oxley Nature Center●Parents Assistance Center●Parents Helping Parents●Parkinson Foundation of the Heartland●Photographic Art & Science Academy●Play and Learn Preschool, Inc.●Poncan Theatre Company, Inc.●Positive Tomorrows●Possibilities, Neighbors in Action, Inc.●Project Transformation●RAIN Tulsa●Rainbow Fleet●Margaret P. Raymond●Reaching Hands, Inc.●Rebuilding Together OKC●Rebuilding Together Tulsa●Recycle For Life●Redeemer Lutheran Jr./Sr. High School●Regional Food Bank of Oklahoma●Richard Dulaney Foundation●Rogers County Volunteers for Youth●Ronald McDonald House Charities of Oklahoma City, Inc.●RSVP of Central Oklahoma, Inc.●The Salvation Army●San Miguel Middle School of Tulsa●Sarah R. McLauchnin●Scope Ministries International, Inc.●Simon Estes Educational Foundation●The Sky’s The Limit Ranch●Southern Plains Inter-Tribal Epidemiology Center●Special Care, Inc.●Special Kids●The State Chamber●Stillwater Children’s Museum●Street School, Inc.●Stroman & Associates●Suited for Success●Sunbeam Family Services●Sustainable Tulsa●Tenth Street Community Fund, Inc.●The Institute for Marriage and Community Initiatives●The Oklahoma Humanities Council●Therapetics Service Dogs of Oklahoma●John E. Thompson●Tinker AFB Youth Center●Travelers Aid Society●Tree Bank Foundation●Tristesse Grief Center●Tulsa Area United Way●Tulsa CASA, Inc.●Tulsa Children’s Museum●Tulsa Glass Blowing Studio●Tulsa Habitat for Humanity●Tulsa Hispanic Chamber Foundation●Tulsa Lawyers for Children, Inc.●Tulsa Metropolitan Citizen’s Crime Commission●Tulsa Symphony Orchestra●Undercroft Montessori●United Way of Central Oklahoma●United Way of Enid and N.W. Oklahoma, Inc.●University Village Healthcare, LLC●Up With Trees●UPAED Foundation●Urban League of Greater Oklahoma City, Inc.●Variety Health Center, Inc.●Volunteer Center of Greater Tulsa●Volunteers for Animal Welfare●Westview Boy’s Home●William W. Barnes Children Advocacy Center, Inc.●YMCA of Enid●YMCA of Greater Oklahoma City●Youth and Family Services-El Reno●Youth at Heart, Inc.●Youth Cornerstone●YWCA of Oklahoma City●YWCA of Southern Oklahoma



Howard G. Barnett,

Board Chair

The steps that we've taken this year and the successes that have come with them have served to show us what can be. Just as ground has been won and Oklahoma nonprofits are in a better position than they were a year ago, there is much more ground to be taken and much more work to be done to ensure that our nonprofit organizations in this state will be equipped to move forward and maximize their positive effect on our state.

With such a large scope of trainings, programs and resources, a good support system is critical to success. We, at the Center, have been blessed to have that strong backing through our member nonprofits, our corporate partners, volunteers, staff and board.

We are glad for the things we have seen accomplished and the help that we have received in the pursuance of excellence.

We thank you for your support and look forward to the things ahead!

The Board of Directors

Ann Ackerman, PhD

Chief Executive Officer

Leadership Oklahoma, Oklahoma City

Janie Axton

Oklahoma City Community Volunteer

Howard G. Barnett, Board Chair

Managing Director

TSF Capital, LLC, Tulsa

Jed Dillingham

Executive Vice President

Dillingham Insurance, Enid

Becky J. Frank

Chief Executive Officer

Schnake Turnbo Frank | PR, Tulsa & OKC

Jean Harbison

Lawton Community Volunteer

Albert “Kell” Kelly

Chief Executive Officer

SpiritBank, Tulsa

Lou Kerr

President and Chairman of the Board

The Kerr Foundation, Oklahoma City

Lisa Korner

Senior Vice President, HR & Administration,

Magellan Midstream Partners, L.P., Tulsa

Robert Langland, Secretary Treasurer

Chief Financial Officer

Hillcrest Healthcare System, Tulsa

William R. McKamey, Board Chair Elect

Vice President, External Affairs

Public Service Company of Oklahoma, Tulsa

Callie Mitchell

Community Volunteer, Tulsa

Joe Moran

Community Volunteer

The Moran Family Foundation, Tulsa

Ann Owens

Development Director

Eastern Oklahoma State College, Wilburton

Pam Peck

Vice President & Treasurer

Dollar Thrifty Automotive Group, Tulsa

Mark Poole

President

Summit Bank, Tulsa

Steve Potts

Financial Advisor

Wachovia Securities, Oklahoma City

Susan Shields

Attorney

McAfee & Taft, Oklahoma City

Robert L. Spinks, EdD

President and CEO

United Way of Central Oklahoma,

Oklahoma City

Marnie Taylor

Oklahoma City Community Volunteer

Lew Ward

Chairman

Ward Petroleum Corporation

Michael Warren

Vice President

Bank of the West, Oklahoma City

Kay Watson

Manufacturing Extension Agent

Oklahoma Alliance for Manufacturing,

Ardmore

Lon Winton

Sr. Vice President / Chief Information Officer

SandRidge Energy, Oklahoma City

James N. Young,

President, Oklahoma City Region,

JP Morgan Chase Bank, Oklahoma City

The 2008 ONE Awards

The first annual ONE Awards was held on April 12, 2008 at the Renaissance Hotel in Tulsa. This event honors those nonprofits within the state that exemplify outstanding performance of their mission. The event gives much deserved recognition to the hard work of these organizations, and

monetary awards are presented as well. The 2008 gala featured nine categories, 27 award recipients, and a total of over \$160,000 presented to the finalists.

The event was a soaring success and the preparation for next year's event is well underway.



**CHARLES AND LYNN SCHUSTERMAN FAMILY FOUNDATION
AWARD FOR EXCELLENCE**

2008

Regional Food Bank of Oklahoma

THE BARNETT FAMILY FOUNDATION AWARD

ARTS AND HUMANITIES

2008

Tulsa Ballet

Sam Noble Oklahoma Museum of Natural History

The Jasmine Moran Children's Museum

SEMGROUP, L.P. AWARD

SENIORS

2008

Alzheimer's Association

Oklahoma and Arkansas Chapter

Daily Living Centers

Elder Care

**H.A. AND MARY K. CHAPMAN CHARITABLE TRUSTS
AWARD**

SPORTS AND RECREATION

2008

The First Tee of Tulsa/

The First Tee of Metropolitan Oklahoma City

The Denny Price Family YMCA of Enid, Oklahoma, Inc.

Boys and Girls Clubs of Oklahoma County

**BOARD OF DIRECTORS OKLAHOMA CENTER FOR NON-
PROFIT AWARD**

COMMUNITY

2008

Oklahoma City National Memorial & Museum

The Nature Conservancy in Oklahoma

Oklahoma Community Institute

**HERMAN KAISER FOUNDATION/ANNE & HENRY ZARROW
FOUNDATION AWARD**

YOUTH DEVELOPMENT

2008

Special Care, Inc.

Youth and Family Services of

North Central Oklahoma, Inc.

Happy Hands Education Center

ONE AWARD SELECTION COMMISSION AWARD

SELF-SUFFICIENCY

2008

Oklahoma League for the Blind

Dale Rogers Training Center

Regional Food Bank of Oklahoma

POTTS FAMILY FOUNDATION AWARD

EDUCATION

2008

Sadler Arts Academy

The Marcus Garvey Leadership Charter School

KIPP Reach College Preparatory/

KIPP Tulsa College Preparatory

**THE GEORGE KAISER FAMILY FOUNDATION
AWARD**

COMMUNITY HEALTH SERVICES

2008

Enid Community Clinic

Eastern Oklahoma Donated Dental Services, Inc.

Clarehouse

**MORAN FAMILY FOUNDATION/
HILLCREST HEALTHCARE SYSTEM AWARD**

HEALTH SERVICES—LARGE

2008

The Children's Center

Variety Health Center

Duncan Regional Hospital

2007-2008 in Review...

The combined average ranking for training sessions was above 89%.

The Center reached beyond **3500** in total number of services provided in '07-'08.

The Center conducted over **100** training sessions in Oklahoma City and Tulsa.

The Center conducted 18 Standards for Excellence introduction sessions, 26 clinic series to over 400 attendees, and graduated 26 organizations from the program in fiscal year 2007-2008.

In the past year, the Center has **more than tripled** its membership base. At the end of the '07-'08 fiscal year, the Center Membership Network included **281** organizations.

Summarized Condensed Statement of Financial Position

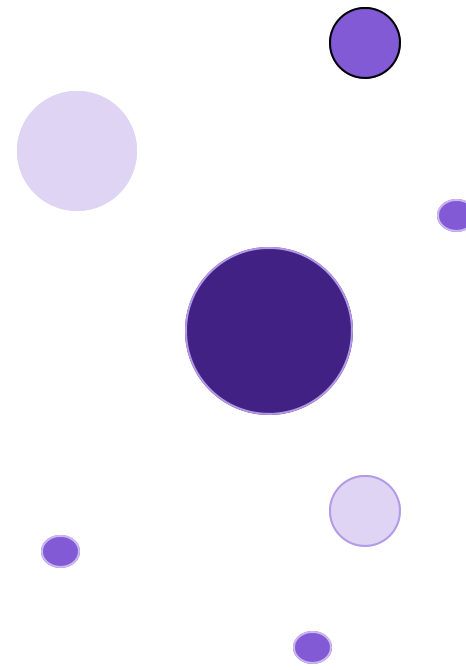
June 30, 2008

Assets

Cash and cash equivalents	\$ 297,736
Other current assets	<u>21,091</u>
Total current assets	\$318,827
Other assets	<u>90,525</u>
Total assets	<u>\$409,352</u>

Liabilities and Net Assets

Current liabilities	\$ 77,913
Unrestricted net assets	<u>331,439</u>
Total liabilities and net assets	<u>\$409,352</u>



Summarized Condensed Statement of Activities

Year ended June 30, 2008

Operating revenues and other support

Program service fees	\$161,146
Contributions and grants	951,857
Other revenues and grants	<u>97,264</u>
Total operating revenues and other support	<u>\$1,210,267</u>


Operating expenses

Program expenses	\$628,215
Management and general expenses	340,647
Fundraising expenses	<u>\$147,482</u>
Total operating expenses	\$1,116,344

Change in net assets from operations \$93,923

Net Assets, beginning of year \$237,516

Net Assets, End of Year \$331,439



These summarized condensed statements were derived from audited financial statements.

Diamond Members - \$50,000 or more

Charles and Lynn Schusterman Family
Foundation

Chesapeake Energy Corporation

Devon Energy Corporation

George Kaiser Family Foundation

H.A. and Mary K. Chapman Foundation

Potts Family Foundation

The Barnett Family Foundation

Platinum Members -

\$25,000-49,999

Anne & Henry Zarrow Foundation

Herman Kaiser Foundation

Hillcrest HealthCare Systems

Inasmuch Foundation

Moran Family Foundation

The Oklahoma Publishing Company

Gold Members - \$10,000-24,999

Allied Arts

Bank of the West

Howard and Billie Barnett

JP Morgan Chase Bank

Larry and Polly Nichols

Lew and Myra Ward

The Grace and Franklin Bernsen Foundation

The Kerr Foundation

The Kirkpatrick Family Fund

The Merrick Foundation

The Ralph and Frances McGill Foundation

United Way of Central Oklahoma

*Chairman's Circle
Donor Recognition
Society*

Staff

Debby Hampton,

President & CEO

Julia Anderson,

Database Secretary

Tod Bryant

Programs Director

Glenda Buckmier,

Executive Assistant

Danielle Garlington

Client Services Manager

Donna Gregory

Standards for Excellence Manager

Taylor McCord

Marketing Coordinator

Barbara Skelton

Chief Financial Officer

Dana Wilkes

Resource Development Director

Kelly Wilson

Client Services Manager

